

**MORE THAN 100 YEARS BUILDING FOR ARGENTINA AND FOR THE WORLD**

# INDEX

- COMPANY OVERVIEW
- GROUP OF COMPANIES PROFILE
- CORPORATE SOCIAL RESPONSABILITY (CSR) PRINCIPLES

- JOSÉ CARTELLONE
- PREAR
- CARTELLONE INDUSTRIAL

# COMPANY OVERVIEW

We are an Argentinian company with 100 years of track record in construction of highly complex projects, with experience in more than 20 countries.

Since its foundation in 1918, the company has expanded its business to the most diverse areas, which currently include construction, energy, road concessions, prestressed concrete parts, steel foundries, and production of biofuels from sugar cane, among others. These businesses shape what the Cartellone Group is today.

## Companies that make up the group

Construction Division	>	
Industrial Division	>	
Precast Division	>	
Steel Foundry Division	>	
Steel Foundry Division	>	
Road Concessions Division	>	

## Operation countries

	ARGENTINA		EL SALVADOR		PANAMÁ		AUSTRALIA
	BOLIVIA		BRAZIL		BAHAMAS		SUDÁFRICA
	CHILE		HONDURAS		JAMAICA		SINGAPORE
	COSTA RICA		PERÚ		TRINIDAD & TOBAGO		NORWAY
	ECUADOR		GUATEMALA		UNITED ARAB EMIRATES		
	URUGUAY		PARAGUAY		UNITED STATES OF AMERICA		

# GROUP OF COMPANIES PROFILE

- We generate strategic alliances with other companies to carry out projects.
- Our main objective is to seek the satisfaction of our clients.
- We add value to our clients through synergies between the Group member companies.
- We develop projects for the most diverse economic sectors.
- Our policy is to work with high ethical, safety, environmental protection and quality standards for all the members of the company, our clients, partners, subcontractors, and suppliers.
- We develop and manage concessions.
- We include the concepts of economic, social and environmental sustainability in the strategy of all the businesses and projects in which we participate.

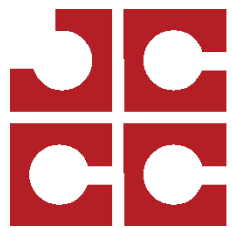
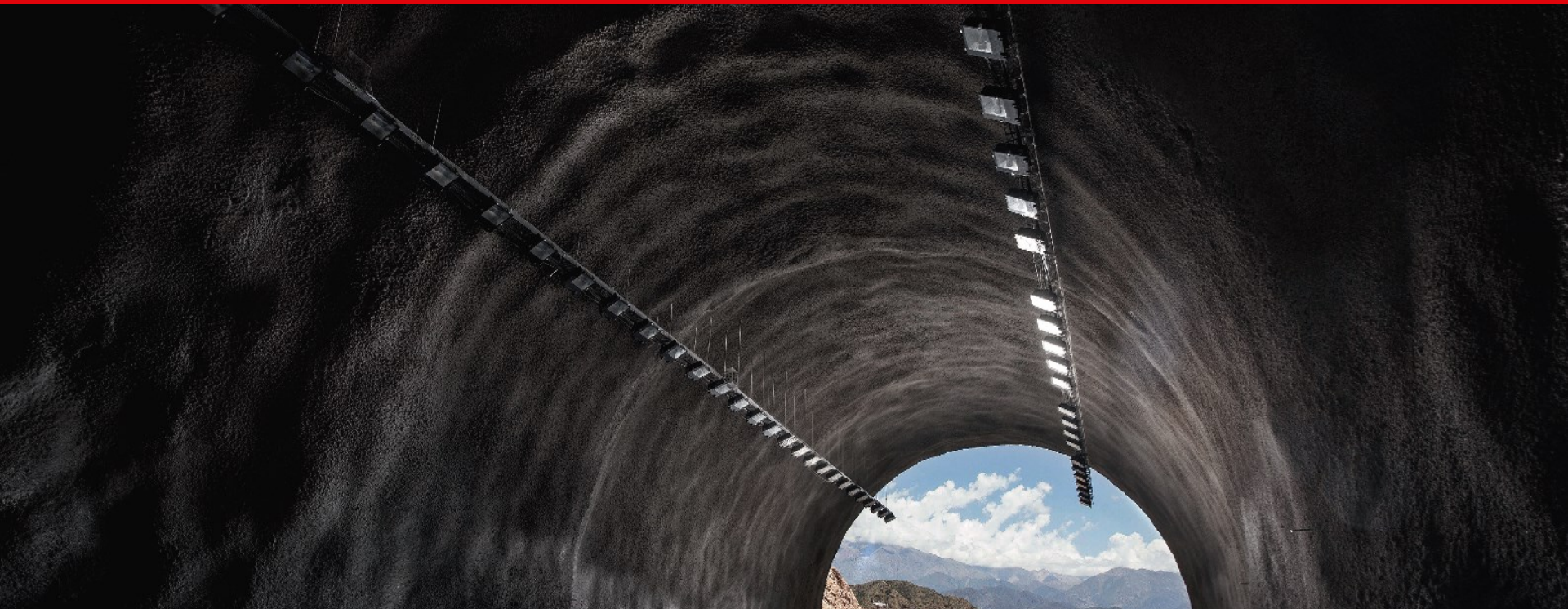
# CORPORATE SOCIAL RESPONSABILITY (CSR) PRINCIPLES:

- Continuous search for the improvement of the quality of our services by making available to employees the necessary means to seek client satisfaction.
- Effectiveness and efficiency in all our actions, making use of the most appropriate means in each case.
- Legal compliance in all business and professional activities carried out in all countries where the Company has a presence.
- Collaboration in economic and social development of the areas in which we operate.
- Dialogue, integrity and transparency in the business and professional activities of the Company towards its stakeholders, providing truthful, reliable and accessible information.
- Thorough respect for the principles included in the Declaration of Human Rights.
- Pollution prevention and minimization of the environmental effects that our activities may cause.
- Empowerment of research, development and innovation in the activities we develop.

# Companies that make up the group







**JOSE CARTELLONE  
CONSTRUCCIONES CIVILES S.A.**

CONSTRUCTION DIVISION

## ABOUT US



In 1918 the construction company was founded, which over the years acquired the name of José Cartellone C.C. S.A. Constant progress has allowed it, over decades, to become the leading company in the Argentine Republic, and to achieve a strong presence in most markets of the Continent.

Since its foundation in 1918, the company has expanded its business to the most diverse areas. The wide range of projects covers from public and private enterprises, of international importance, projects under the Build, Operate and Transfer (BOT) modality, and Public Private Partnership (PPP) projects including financial solutions, among others.

This experience and track record have been fundamental to prepare a solid and outstanding human group capable of leading different types of infrastructure projects, providing the best technical, economic and financial solutions for clients.



# MAIN ACTIVITIES



Dams and hydroelectric power plants



Highways



Hydraulics and sanitation projects



Industrial projects



Underground projects



Port facilities



Mining infrastructure



Architecture projects



Renewable Energy projects



Power transmission lines and substations

# NUMBERS



MORE THAN 100 YEAR



MORE THAN 2,700 EMPLOYEES



OFFICES IN 4 COUNTRIES

More than 100 km of underground works

More than 2,000 km of 500 kV transmission lines

More than 10 km of bridges

More than 5,000 km of highways

More than 2,000 construction equipment

Installed power: more than 2,100 MW

Concrete volume: more than 6.5 million m<sup>3</sup>

Tons of steel: more than 100,000 tn

# ONGOING PROJECTS

National Highway N°7 Giles Areco - Bs. As. - Arg.

Length: 33 km

Highway N°33 Santa Fe - Arg.

Length: 72 km

Second Sewage Tunnel Arroyo Vega - CABA - Arg.

Tunnel length: 8,400 m

Almafuerte II Penitentiary - Mendoza - Arg

Surface of 36.000 m2 to accommodate 1.046 people

Miramar Wind Farm - Bs. As. - Arg.

Power: 98,6 MW

National Highway N° 34 - Salta/Jujuy limit - Arg.

Length: 25 km

National Highway N° 7 Palmira By Pass - Mendoza - Arg.

Length: 36 km

El Paramillo Sewage Treatment Plant - Mendoza - Arg.

Capacity: 1.000 l/s

Boedo - Ponce Collector Expansion - Mendoza - Arg.

Collector length: 21 km

Arijón Aqueduct Sections IV y V Santa Fe - Arg.

Aqueduct length: 56 km

Guañizuil Photovoltaic Park - San Juan - Arg.

Power: 117 MWp

500 kV Rodeo Power Transmission Line - San Juan - Arg

Length: 160 km

# ONGOING PROJECTS

L'Amali II Cement Plant Expansion, Olavarría - Bs. As. - Arg.

Civil works

El Chaparral Hydroelectric Power Project Hydromechanical Equipment - El Salvador

Supply and erection of hydromechanical equipment for botiom outlet, adduction tunnel and lifting equipment

El Chaparral Hydroelectric Power Project - Construction of RCC Dam - El Salvador

Concrete volumen: 390,000 m<sup>3</sup>

El Chaparral Hydroelectric Power Project – Construction of spillway and stilling basin - El Salvador

Civil works

Santa Ana - Sonsonate Highway By Pass- El Salvador

Length: 10 km

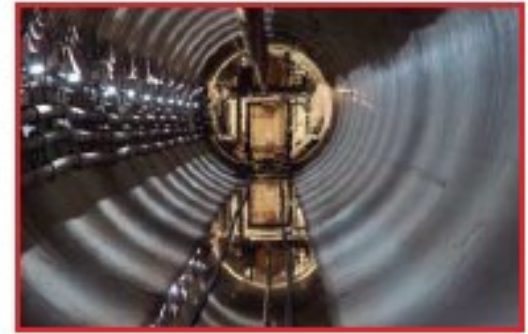
# SOME PROJECTS



*Hydroelectric power project*  
Piedra del Águila- ARG.



*Architecture project*  
Estadio Malvinas Argentinas - ARG.



*Hydraulic and sewage Project*  
Segundo Emisario Arroyo Vega - ARG.



*Highway tunnel*  
Túnel Vía Interoceánica- ECUADOR



*Port facility*  
Almirante Storni- ARG.



# SOME PROJECTS



*Cable-stayed bridge*  
Bridge over Pastaza river – ECUADOR



*Industrial facility*  
Coke Unit - YPF - ARG.



*Renewable Energy project*  
Parque eólico Manantiales Behr- ARG.



*Mining project*  
Veladero- ARG.



*Power transmission line*  
Comahue Cuyo- ARG.



PRECAST DIVISION

## ABOUT US



One of the pioneers in Argentina, both in prefabrication of concrete elements as in the introduction of pre-stressing techniques, since the beginning of activities in 1971, first as the Pre-stressed Division of José Cartellone C.C. (Business group to which it belongs) and later, since 1977 as PREAR Pretensados Argentinos S.A.

The company is focussed to meet the demands of the market developing profitable and innovative precast concrete solutions, privileging the quality of its products.

For this, it has 4 industrial plants strategically located in:

- San Pedro, Province of Bs. As.: this plant counts with top of the line Wegh Group Italia technology to produce Monoblock railroad sleepers under the Long Line system.
- Coquimbito, Maipú, Province of Mendoza.
- Bahía Blanca, Province of Bs. As.
- Allen, Province of Río Negro.

These last two, focussed to the manufacture of precasted dovels for the wind turbine towers at wind farms, supporting the Bahía Blanca Petrochemical's and Vaca Muerta's Area respectively.

# MAIN ACTIVITIES



Oil & Gas and  
mining infrastructure



Architecture



Industrial  
projects



Electrical  
infrastructure



Renewable  
energy projects



Highway  
infrastructure



Sports  
infrastructure

# NUMBERS



MORE THAN 40 YEARS

More than 40 years of experience in the design and manufacture of pre-cast concrete.



MORE THAN 650 EMPLOYEES

4 production plants in Argentina, with a production capacity of more than 10,000 m<sup>3</sup> of concrete.

More than 600 construction equipment.



4 PLANTS IN ARGENTINA

## **Monthly production capacity at:**

Mendoza plant: 1,500 m<sup>3</sup>

San Pedro plant: 4,000 m<sup>3</sup>

Bahía Blanca plant: 2,600 m<sup>3</sup>

Allen plant: 2,600 m<sup>3</sup>



# ONGOING PROJECTS

## ALLEN PLANT:

Manufacture of pre-cast segments - Vientos Neuquinos Wind Farm – Neuquen – Arg.

Manufacture of 660 pre-cast segments for 24 wind turbine towers 120 m high.

## BAHÍA BLANCA PLANT:

Manufacture of pre-cast segments –Energética I Tres Picos Wind Farm- Bs. As. - Arg.

Manufacture of 528 pre-cast segments for 30 wind turbine towers 120 m high

## MENDOZA PLANT:

Public Prosecutor's Office Building - Criminal Judicial Center of Mendoza - Arg.

Pre-cast structure for 15,000 m2 building, 2 underground and 5 emerging levels.

Rodeo-Iglesia High Voltage Line tower foundations

Manufacture of 480m3 of pre-cast concrete in cross rope type bases and anchor plates

Manufacture of pre-stressed beams and precast pieces - Nacional Highway N°7 – Palmira By Pass

Manufacture of 334 pre-stressed beams, 17,000m2 of slabs and 27,000m2 of scales, for the construction of 10 vehicular bridges

# ONGOING PROJECTS

Manufacture of precast structure for Microstadium – Tierra del Fuego – Arg.

8,500 m2 Surface capable to house 5,500 spectators

## SAN PEDRO PLANT:

San Martin Railroad Viaduct – Bs. As. – Arg.

170 Nabras-type beams, 2,600 m pre-cast channels, station platform concrete slabs and stairs.

New CABA Federal Sports Center – Bs. As. – Arg.

12,000 m2 Wall partitions of pre-stressed hollow slabs

Parque Industrial Pilar Industrial Plant - Bs. As. - Arg.

Pre-cast building 50x70 m (column structure, beam mezzanines, hollow slabs and pre- fabricated facade panels)

Tres Picos Oeste 132 KV transmission line and 132/33 KV substation - Bs. As. - Arg.

Structures formed by vibrocentrifugal poles and pre-cast accessories.

# SOME PROJECTS



*Mining project*  
Gualcamayo – ARG.



*Industrial project*  
50 ppm – CILC YPF - ARG.



*Electrical infrastructure project*  
Poles and devices for transmission line



*Architecture project*  
Terrazas del Portezuelo - ARG.



*Sports infrastructure project*  
"La Pedrera" Stadium- ARG.



*Cable-stayed bridge*  
Bridge over Fifth river- ARG.



**CARTELLONE  
INDUSTRIAL**

ELECTROMECHANICAL DIVISION

## ABOUT US



Development of the Oil and Gas sector in Argentina, prompted the Cartellone Group to accompany this growth. This is how, starting in 2011, the Group began to operate in the electromechanical assembly market, transferring its know-how in the experience of this new business unit, which constituted a new challenge and an enormous responsibility.

The first jobs in the Electromechanical Constructions segment were carried out in YPF's refineries in La Plata and Luján de Cuyo. From that moment on, the company expanded its presence towards different oilfields in the country as well as to other industrial sectors like energy and mining.

The constant growth of this business unit motivated the Group to create in 2017 a new company to fully address electromechanical works.

The proposal is complemented by a manufacturing workshop located in Luján de Cuyo, Mendoza, where all kinds of process equipment and large-scale metal structures can be built. The different areas of the company are supported by the ability and experience of professionals with many years in the field that also count on the support and solidity of those who lead the Cartellone Group.



# MAIN ACTIVITIES

## ENGINEERING AND CONSTRUCTION:



Pipelines and loading terminals



Oil and gas field infrastructure



Process plants for oil and gas, mining, cement, industry



Transmission lines and substations



BOP of thermoelectric plants and wind farms



Mining electromechanical infrastructure

## SERVICES:



Maintenance of oil & gas installations, power plants, pipelines and electric lines



Metal structures, supports, prefabricated pipes



Interchangers, separators, heaters, furnaces, API tanks, pressure vessels



Hydromechanical equipment

# NUMBERS



MORE THAN 9 YEARS



MORE THEN 130 EMPLOYEES



PLANT IN MENDOZA

Engineering and Construction: 480,000 man-hours / year

**Industrial plant in Luján de Cuyo:**

Surface: 15,000 m<sup>2</sup>

Capacity: 11,000 ton/year of heavy structure or 3,000 tons of light structure



# SOME PROJECTS



*Pipeline*  
Paseo del Bajo - ARG.



*Oil & Gas infrastructure*  
Loma La Lata - ARG.



*Cement process plant*  
L'Amali - ARG.



*Workshop*  
Tanks



*Services*  
Maintenance



*Mining*  
Veladero - ARG.



[WWW.CARTELLONE.COM.AR](http://WWW.CARTELLONE.COM.AR)

